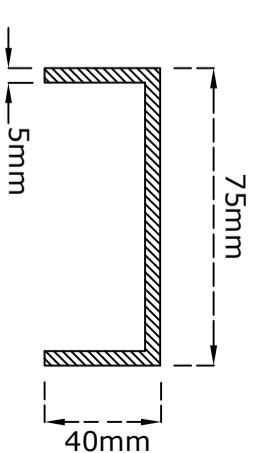


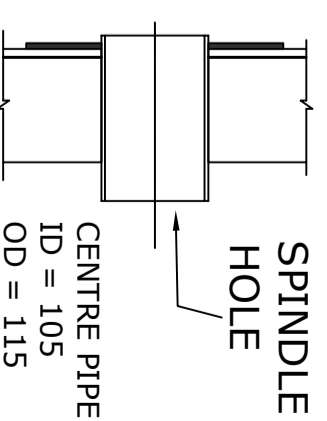
M8x25mm BOLT WITH NUT & WASHER 5 Nos. IN EACH JOINT OF THE SECTIONS



DETAIL at 'D'

PIN HOLE (DRIVE HOLE)
MIN 2 PIN HOLES REQUIRED PER FLANGE
DIA = 65mm (5mm thick)
LENGTH = 70mm

BARREL IN MAXIMUM FOUR SEGMENTS



SPINDLE HOLE

CENTRE PIPE
ID = 105
OD = 115

STANDARD DRAWING

NOTE :

- (i) Flanges shall have non corrosive primer coat and enamel paint .
- (ii) Washers are required on all bolts.
- (iii) Barrel and inner surface of flange shall have water proof protective HDPE sheet.
- (iv) Medium grade Craft/Crepe/Polythene Paper shall be used in between the Layers of Conductor.
- (v) Tolerance overall : +5mm.
- (vi) Tolerance on sheet metal : +0.1mm.
- (vii) Tolerance on other M.S items : +3mm.
- (viii) Tolerance on thickness for other M.S items : +0.5mm.
- (ix) Tolerance on bush : +2mm.
- (x) All dimensions are in mm
- (xi) All mild steel shall conform to IS-2062

Name of the Parts	Material Specification	Quantity	Dimensions
1 OUTER RING	M.S.Plate	2	63x8 mm (FLAT RING)
2 TIE ROD	M.S. ROD	8	18 mm DIA
3 CENTRE BUSH	M.S. PIPE	2	105 mm IDx115 mm OD
4 INNER RING	M.S. PLATE	2	100x6 mm
5 FLANGE	H.R.SHEET	Max 3 CORRUGATED SHEETS PER FLANGE	1.6 mm THICK (min 36 nos. of corrugations)
6 BARREL SHEET	H.R.SHEET	Max 4 SEGMENTS	2.5 mm THICK
7 CROSS ARM	MILD STEEL	4	100mmx70mm, 6mm THICK OR MS CHANNEL 125mmx65mmx6.6mm (LC125)
8 FRAME SIZE(FOR MARKING)			250mmx400mm (APPROX)
9 SOLID PP SHEET	POLY PROPYLENE		3 mm THICK (min)

STANDARD CONDUCTOR LENGTH (in Meters)	A (in mm)	B (in mm)	C (in mm)
.....

Note : Standard Length & Dimensions A, B & C shall be furnished by HTLS conductor supplier.

REVISION		PROJECT DETAILS:			TITLE:					
REV. No	DESCRIPTION	CHKD	REWD	APPD	CHECKED	REVIEWED	APPROVED	SCALE	DRAWING NO. CC: ENGG: TL: COND: ST	REV.
1	PP SHEET Thickness modified.							N.T.S.		1
Cleared by							STEEL DRUM DRAWING FOR HTLS CONDUCTOR			

